

TRIMO QBISS INFILL

MODULAR INFILL PANEL
FOR CURTAIN WALLS



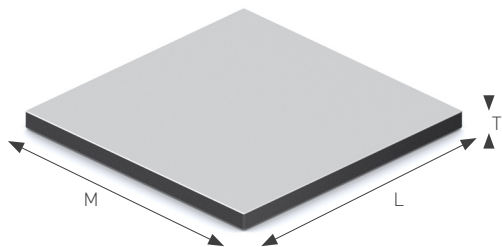
QBISS INFILL

High-performance spandrel panel solution

Qbiss InFill – a modular spandrel panel solution for curtain wall façade systems, delivering seamless integration, high performance, and innovative design.

Qbiss InFill panels are **non-structural modular spandrel panels** designed to seamlessly integrate into curtain wall systems, ensuring a **sleek, modern, and uniform** building facade. Placed between floors or other architectural elements, Qbiss InFill panels form an **opaque section of the façade** where required by the design, aligning with the functionality and aesthetics of the architecture.

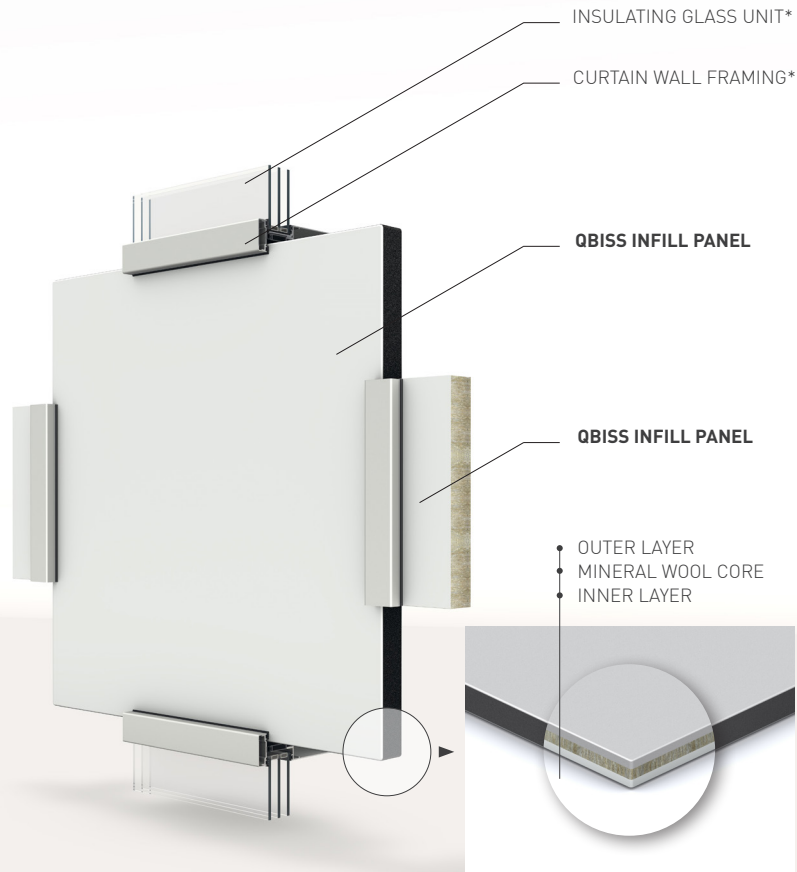
Manufactured with **two galvanised and pre-finished steel or stainless sheets bonded to a non-combustible A1 mineral wool core**. Our spandrel panels offer superior **durability, insulation, and weather resistance**. Their **customizable exterior layer with engraving options of ArtMe**, combined with **automated precision manufacturing**, guarantee **flawless execution and design flexibility** to meet unique project requirements.



T = Thickness (mm) 50 - 170

L = Length (mm) 600 - 2000

M = Modular width (mm) 600 - 1200



* not Trimo scope

TECHNICAL DATA

Thickness	50 – 170 mm
Width	600 – 1200 mm
Length	600 – 2000 mm
Thermal transmittance	0,72 – 0,23 W/m ² K
Mineral wool core	$\lambda = 0,040$ W/mK (EN 12667)
Non-combustible core	A1 (13501-1)
Outer layer	Prepainted Fe & Inox: 0,7 or 0,8 mm
Inner layer	Prepainted Fe & Inox: 0,7 or 0,8 mm

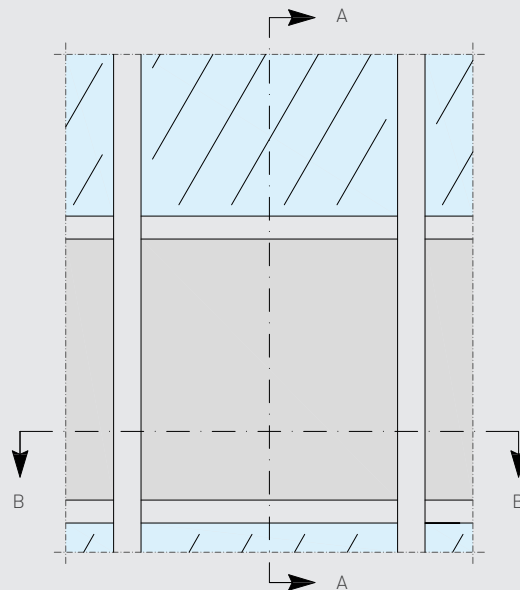
Designed for **efficiency and customer convenience**, Qbiss InFill panels are available for both **stick and unitized curtain wall systems**, optimizing **installation speed and cost-effectiveness**.

Ideal for **high-rise buildings**, our Qbiss InFill panels provide **fire protection, thermal efficiency, and superior structural integration**, ensuring that even the tallest facades maintain **state - of - the - art finish**.

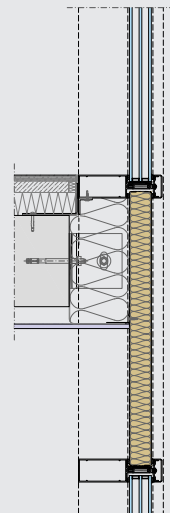
Choose **high-performance Qbiss InFill panels** to elevate your facade system—where **innovation, precision, and aesthetics** come together for a **modern skyline-ready solution**.

INSTALATION DETAIL

FRONT VIEW:



SECTION A-A:



SECTION B-B:

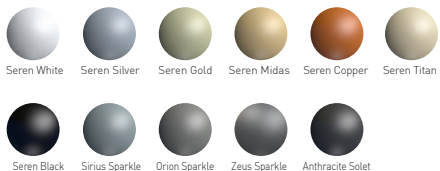


COLOUR RANGE

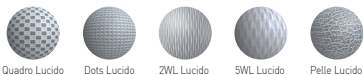
SOLID COLOURS



ELEMENTS*



STAINLESS STEEL**



SPECIAL METALLIC



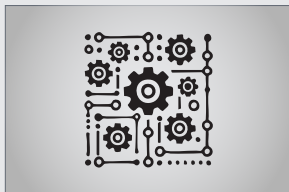
*Colorcoat Prisma and Seren are trademarks of Tata Steel UK Limited

**Stainless steel is a bespoke solution and shall be discussed with the Trimo technical department on an individual project basis from an application and availability perspective.

Colours may deviate slightly due to different monitors and prints compared to original colours. Trimo can send you a metal swatch upon request. Colour range does not in any case define delivery terms or any other terms of specific skin colour. Colour range presented shows only a fraction of most usable colours within the variety of colours available.

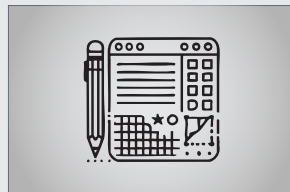
VISION

Maximize efficiency and minimize costs



All in one Tech. solution:

Reduce complexity by eliminating various assembly parts and benefit from a streamlined installation process with an all-in-one prefabricated Qbiss InFill panel.



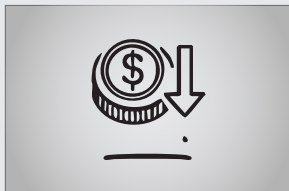
Customization & Aesthetic Design:

Qbiss InFill panels can be customized in thickness, color, and metal surface finishes, offering personalized design possibilities with the ArtMe application.



Effortless Installation:

Opt to **reduce installation time** significantly, as they replace the need for multiple assembly parts.



Cost-Effective Solution:

Enjoy lower material and labor costs, making it a budget-friendly choice for your projects.



Enhanced Thermal Performance:

Our design ensures minimized thermal bridge by preventing contact between the internal and external thin steel sheets.



Safety:

The corners of Qbiss InFill panel are not sharp, requires minimal labor on-site, eliminating the need for additional processing. Manufactured with precision in controlled conditions ensuring a secure and smooth finish.

COMPREHENSIVE SUPPORT FOR CARBON NEUTRAL BUILDINGS

Our ambition is to lead the industry in climate action and foster a more equitable society. Transparency in our objectives and performance is fundamental to earning and maintaining the trust of our stakeholders. As expectations for environmental, social, and governance (esg) commitments and high-performance standards grow, we are dedicated to meeting these priorities with integrity and measurable results.

We support clients in achieving carbon-neutral buildings by offering guidance at every stage, from selecting sustainable materials to providing construction expertise.

Qbiss InFill panel solution embodies sustainability at its core, optimizing thermal performance, and minimizing material and energy use through in-house analysis. Designed with recyclable materials and eco-conscious innovation, it sets a new standard for sustainable architectural façades.

BUILDING A SUSTAINABLE FUTURE ONE PROJECT AT A TIME.



COMPANY PRESENTATION

Trimo is a high-quality global supplier of innovative, flexible, functional and energy-efficient architectural building envelope solutions.

Our customers are at the heart of our operations as we understand their needs and provide them with the highest level of service and product quality. Our work reflects the company's core values of partnership, reliability, responsibility, trust, innovation and passion.

TRIMO D.O.O.

PRIJATELJEVA CESTA 12
8210 TREBNJE, SLOVENIA
T: +386 (0)7 34 60 200
F: +386 (0)7 34 60 127
TRIMO@TRIMO-GROUP.COM
WWW.TRIMO-GROUP.COM

Trimo Group holds full copyrights on the information provided on this media, therefore any unauthorized reproduction and distribution is strictly prohibited.

Published by: Trimo d.o.o., EN 03/2025 | www.trimo-group.com

ID_TID1LE208EN



red dot design award
winner 2010