

TRI MO QBISS SCREEN

Design. Functionality. Durability.







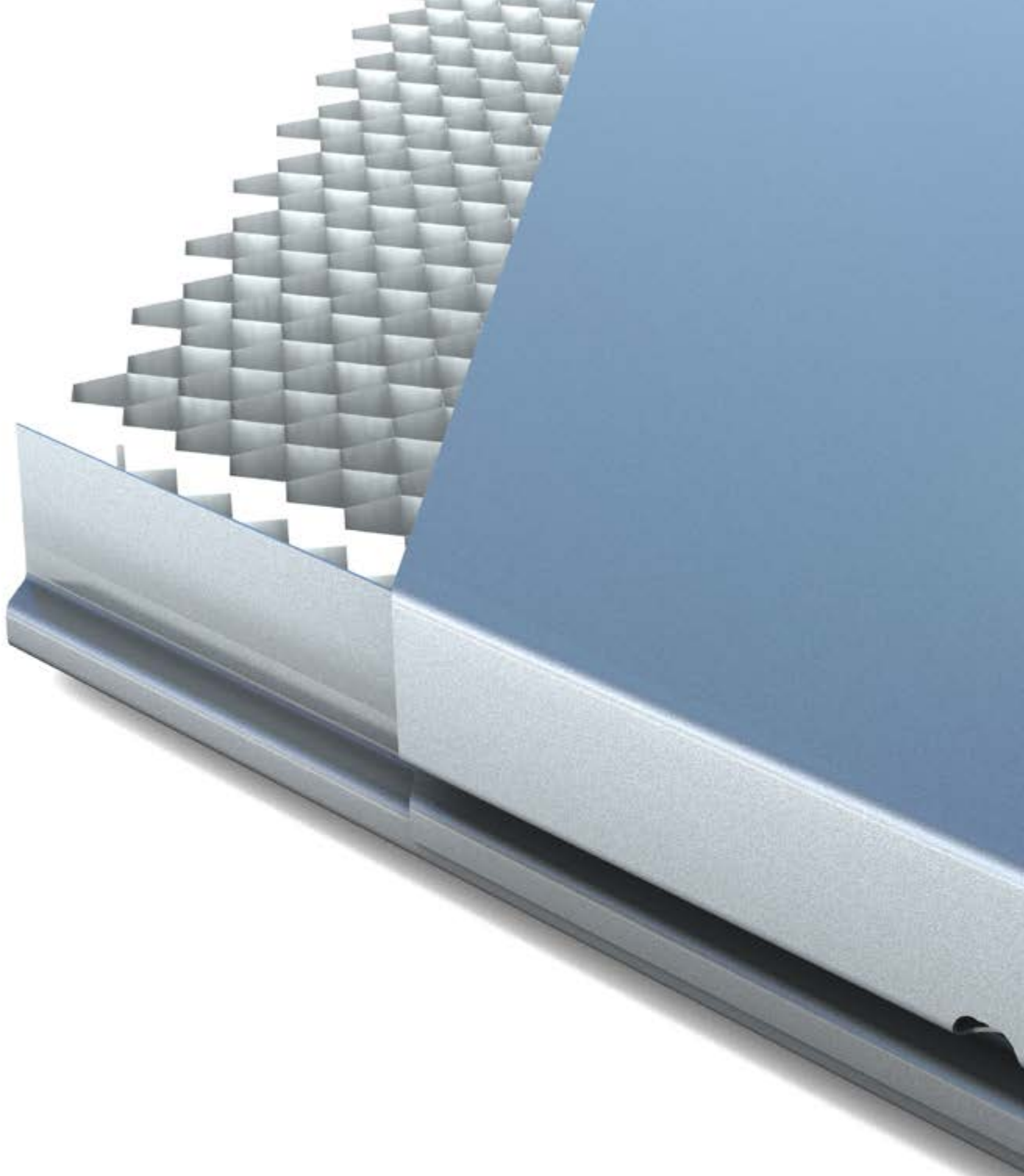
QBISS SCREEN

An **innovative metal rainscreen system** designed for ventilated façade applications and for both new-build and refurbishment use. It comprises of an aluminium honeycomb core, held between two metal skins, with each element corner formed without cutting or folding.

Versatile and flexible, Qbiss Screen is equally applicable as a roof covering or **exterior** and **interior** ceiling and wall, bringing a system-approach to the building envelope, which can be fully combined with the Qbiss One insulated architectural building envelope solutions.

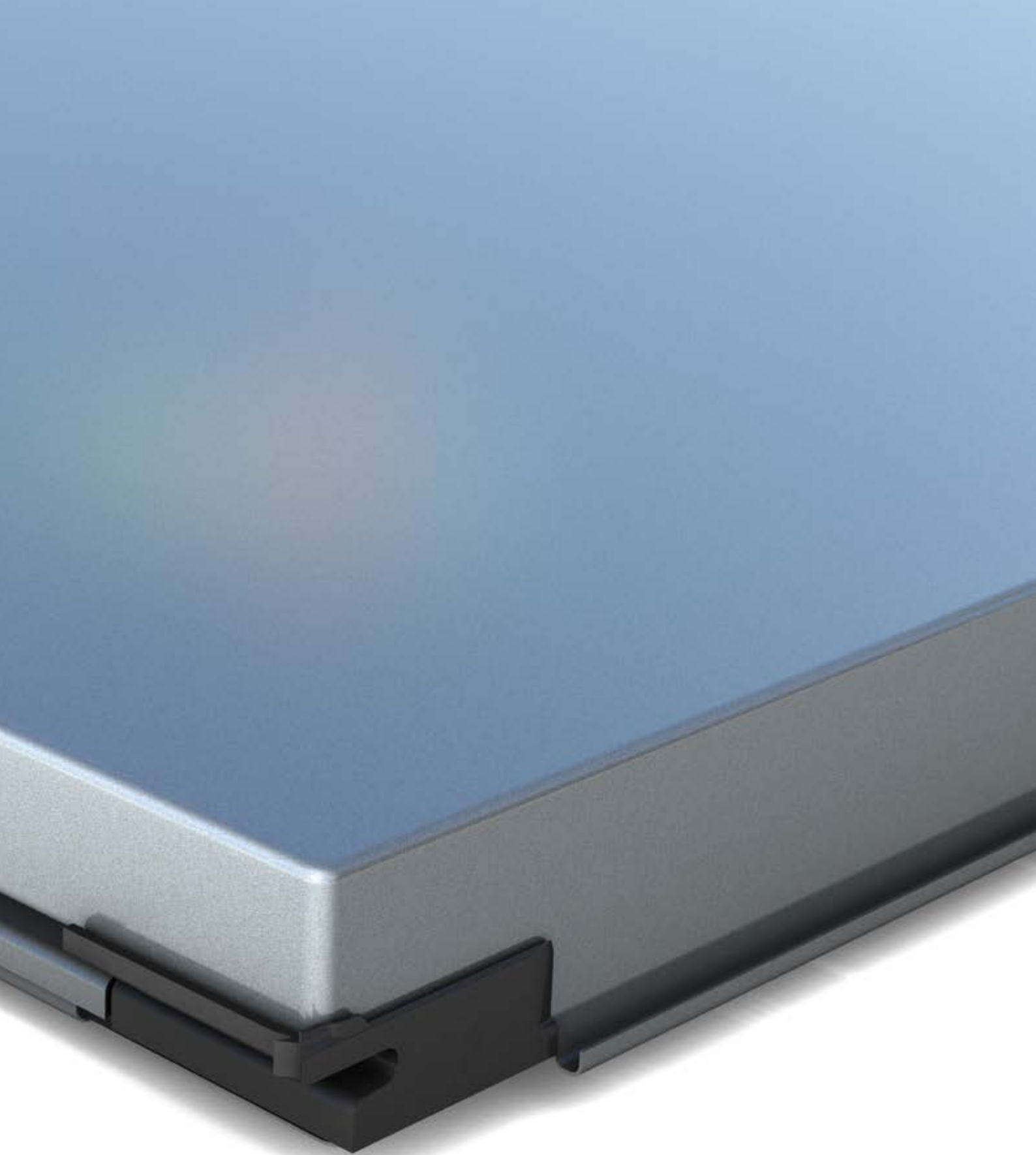
Extremely and **perfectly flat**, Qbiss Screen is also engineered to meet the highest **A2** fire regulation demands as well as extremely **high wind loads** or where **large elements** are required.

Qbiss Screen is manufactured to the exact same standards as all Qbiss products in a fully automated controlled environment that ensures **quality and consistent performance**. It is complemented by a complete range of **architectural detail** solutions, which not only shortens the design process, but adds to the overall construction aesthetic.



SYSTEM'S MAIN COMPONENTS ARE:

- Rainscreen elements
- Fixing material
- Architectural performance details
- Prefabricated single piece folded corner elements
- Windows and doors (optional)
- Substructure (optional)



ELEMENT'S COMPONENTS ARE:

- External prepainted metallic coated steel with PUR or PVDF protection, of the highest standard
- Aluminium honeycomb core
- Internal prepainted metallic coated steel with polyester protection

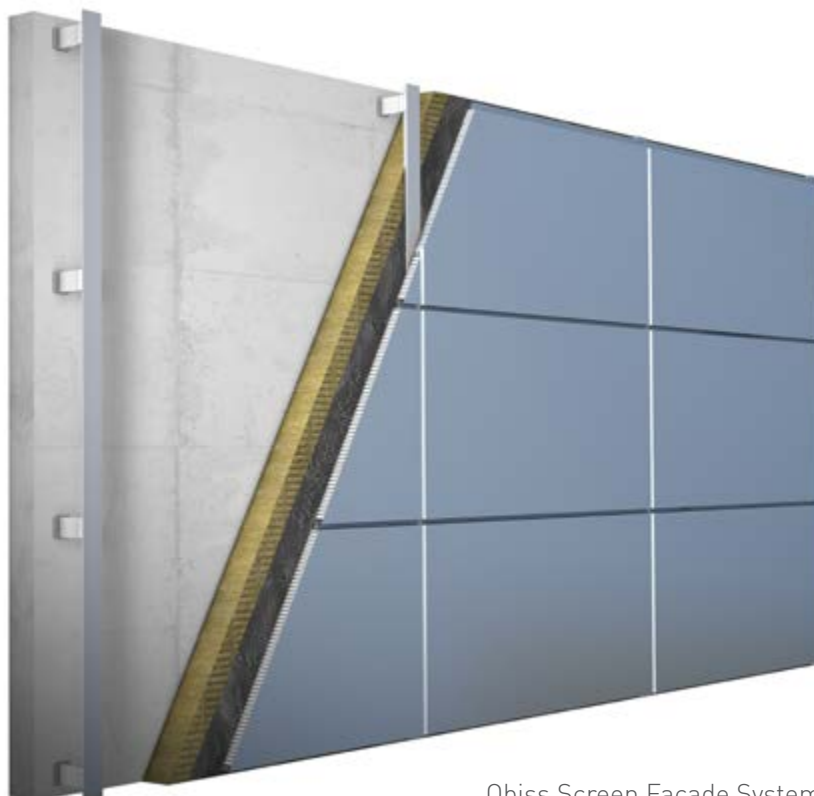
TECHNICAL ADVANTAGES

Compared to conventional rainscreen systems, Qbiss Screen provides a number of technical advantages that opens the product up to the widest construction applications.

- Completely prefabricated elements delivered on site
- Structural spans up to 6500 mm
- Extreme flatness
- Reaction to fire - Class A2
- 50 mm element thickness
- Low weight
- Wide range of formats
- 99% recyclable

Element thickness (mm)		50
Weight (kg/m²)	Fe 0.7/Fe 0.7	14
Core		Aluminium Honeycomb
Reaction to fire - Element (EN 13501-1)		A2*
Element width (mm)		600 - 1200
Element length (mm)		550 - 6500

* Valid for individual elements of surface >3m². Please check with Trimo technical support for your specific individual project requirements.



Qbiss Screen Façade System



DESIGN ADVANTAGES

Qbiss Screen is distinguished by its outstanding aesthetics, which are engineered for the widest architectural applications. From the vast joint permutations and combinations to the different installation variations, colours and material finishes, Qbiss Screen has no equal.

- Unique rounded corner of the element
- No cuts, folds or welds
- Completely flat surfaces
- Available as flat and standard pre-fabricated corner elements
- Wide range of architectural details available
- Various joint options
- Range of material finishes (steel and stainless steel material and in carbon, wooden, copper or other appearance)
- Wide range of colours
- Versatile installation options
- Integrated LED lights in the joints

WIDE RANGE OF COLOURS





APPLICATIONS & USES

Qbiss Screen is suitable for the widest applications and building types.

- Exterior and interior ceiling and walls
- Roof coverings
- New-build and renovation
- Fully compatible with all Qbiss One architectural building envelope solutions
- Short installation time
- Quick and easy element replacement
- Highest quality and durability







A close-up photograph of several rectangular architectural blocks or steps. The blocks are a deep blue color with a fine, woven texture. They are arranged in a staggered, overlapping fashion, creating a sense of depth and geometric form. The lighting is soft, highlighting the texture and the edges of the blocks.

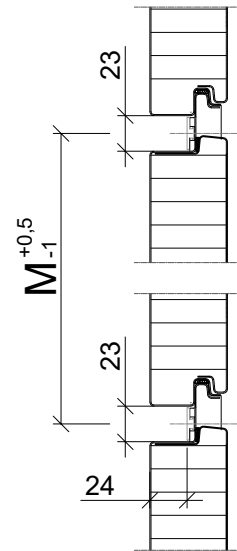
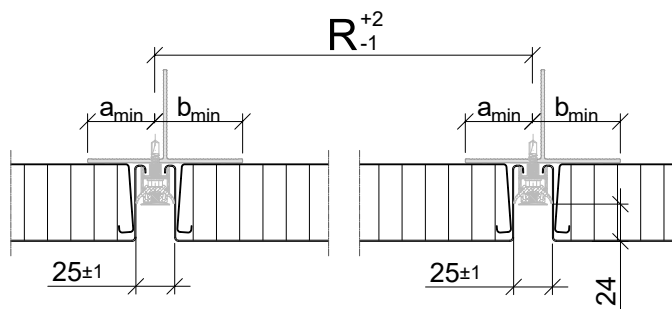
ARCHITECTURAL DETAILS

JOINT DETAIL

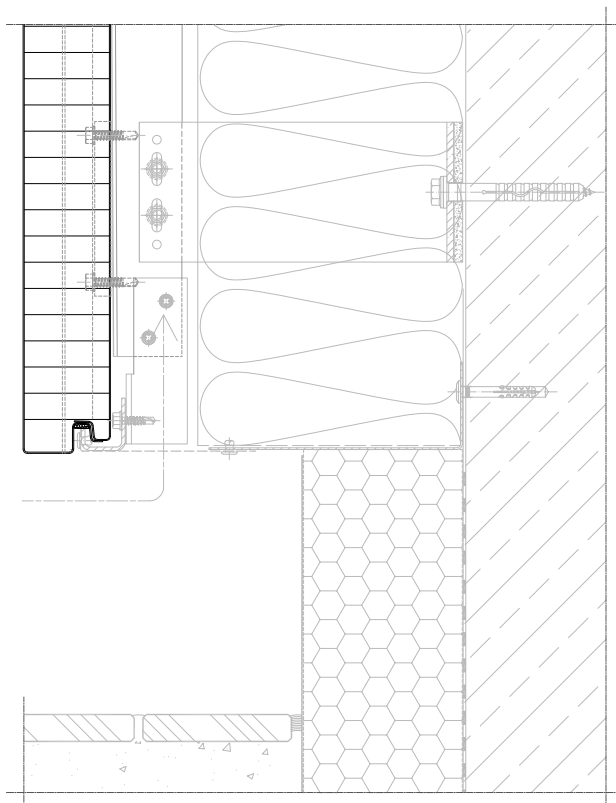
R - facade element length

M - module width

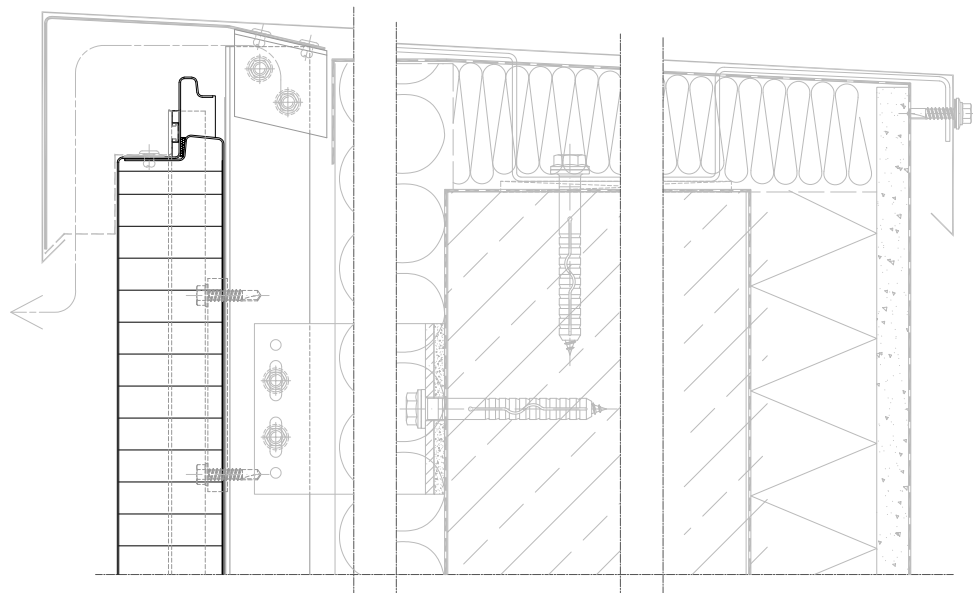
$a_{min} = b_{min} = 50 \text{ mm}$



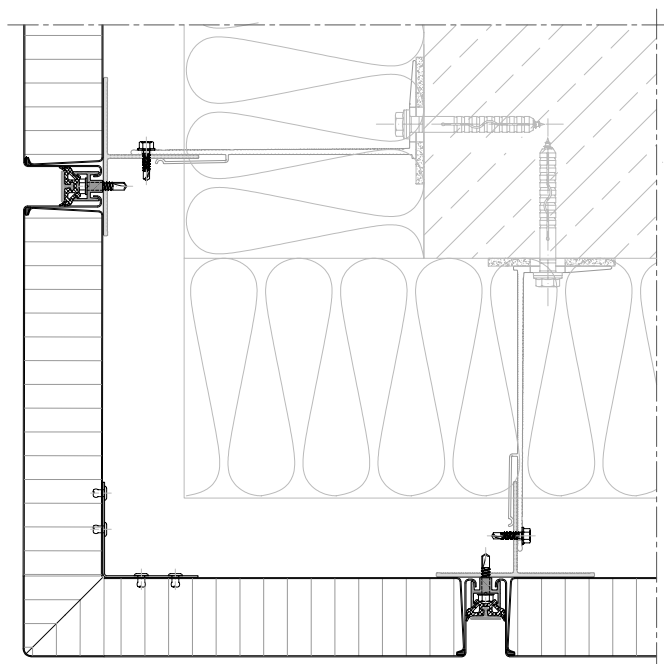
DRIP DETAIL



TOP PARAPET DETAIL



CORNER DETAIL



COMPANY PROFILE

Trimo is one of Europe's leading companies developing original and complete building envelope solutions.

Expert knowledge, sustainability, reliability and a focus on the future are all basic components that have taken Trimo around the world. Today Trimo sells its products and services under its own brand across more than 60 countries worldwide and has a sales network in almost 30 countries.

Portfolio of partners includes companies such as Airbus, London Heathrow Airport, Nestle, Philips, DHL, Porsche, McLaren, IKEA, Prologis, Mercedes Benz, Coca Cola and many others.

TRIMO

TRIMO D.O.O.

PRIJATELJEVA CESTA 12,
8210 TREBNJE, SLOVENIA

T: +386 (0)7 34 60 200

F: +386 (0)7 34 60 127

QBISS@TRIMO-GROUP.COM

WWW.TRIMO-GROUP.COM

Trimo Group holds full copyrights on the information and details provided on this media, therefore any unauthorized reproduction and distribution is strictly prohibited. Professional care has been taken to ensure that information/details are accurate, correct and completed and not misleading, however Trimo, including its subsidiaries, does not accept responsibility or liability for errors or information, which is found to be misleading. Information/details on this media are for general purposes only. Use of it is on your own initiative and responsibility for compliance with local laws. Any deviations in details and project solutions are user responsibility. In no event, will we be liable for any loss or damage including without limitation, indirect or consequential loss or damage, or any loss or damage whatsoever arising from loss profits arising out of or in connection with, the use of this media. All information issued by Trimo Group is subject to continuous development and information/details contained on this media are current at date of issue. It is user's responsibility to obtain most up-to-date information from Trimo when information/details are used for project.

The last version of the document is available on www.trimo-group.com. Latest version of published document in English language prevails over other translated language documents.

For information about the delivery of panels see Trimo's General conditions (<https://trimo-group.com/en/trimo/general-conditions-of-sale>).

